

NATIONAL CRANE

SERIES 400AU WITH CAB



The photo above shows the National Series 400AU (Model 446AU) crane, equipped with an operator's cab, mounted on an Isuzu FTR10 truck. It can also be mounted on a Ford F800D chassis. (Details inside.)



NATIONAL CRANE
A Grove Worldwide Company

The National Series 400AU

This unique, medium-size utility crane can be used to lift and set concrete poles as well as for general purpose materials handling, such as loading/unloading poles, transformers, switches, crossarms, and other utility supplies. Designed for non-energized construction applications. The rotating turret and cab, combined with rear-mounting of the crane, allows the operator to rotate the boom 360° with maximized load visibility.

Description

Basic crane with two sets of out-and-down outriggers (16-ft 1-in span—4908-mm) mounted front and rear on a unitized torsion resisting subbase, hydraulic capacity alert with audible warning, high performance planetary winch with 195 ft (59.4 m) of 1/2-in diameter rotation resistant wire rope, down-haul weight and non-swivel hook, deluxe cab with dome light, wiper, adjustable seat, air-operated foot accelerator, horn, pressure gage, control console with adjustable levers, start and stop switch, tandem pump hydraulic system. Outrigger controls located at rear of crane. Parallel boom rest. Two parts manuals. Painted National Ivory, subbase/outriggers painted black.

446A Boom

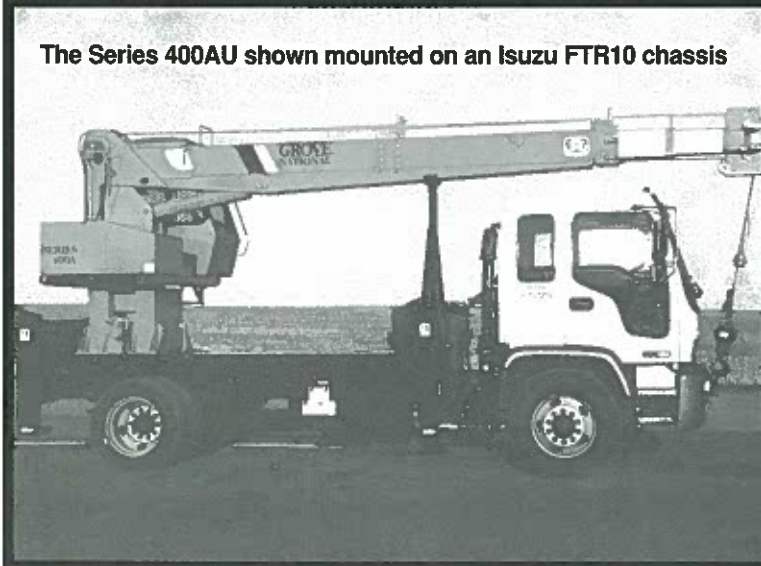
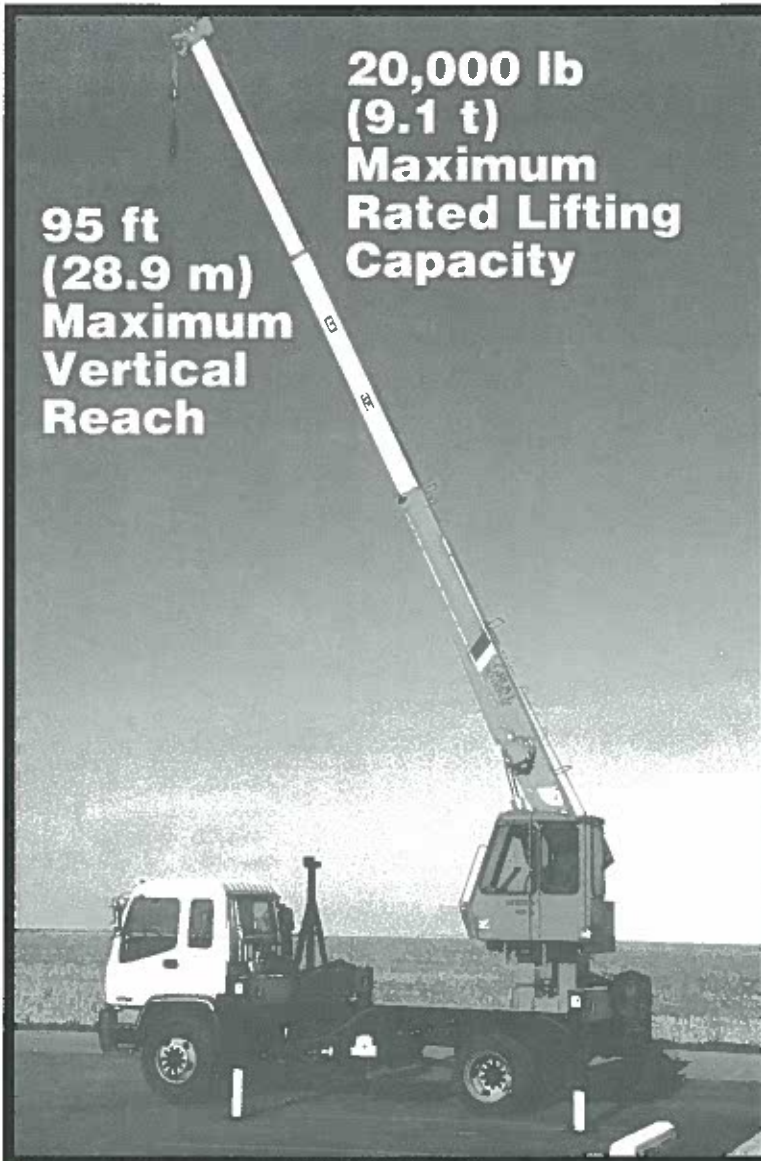
18-ft 7-in to 46-ft (5.7-m to 14-m) telescoping boom (three section)

CR

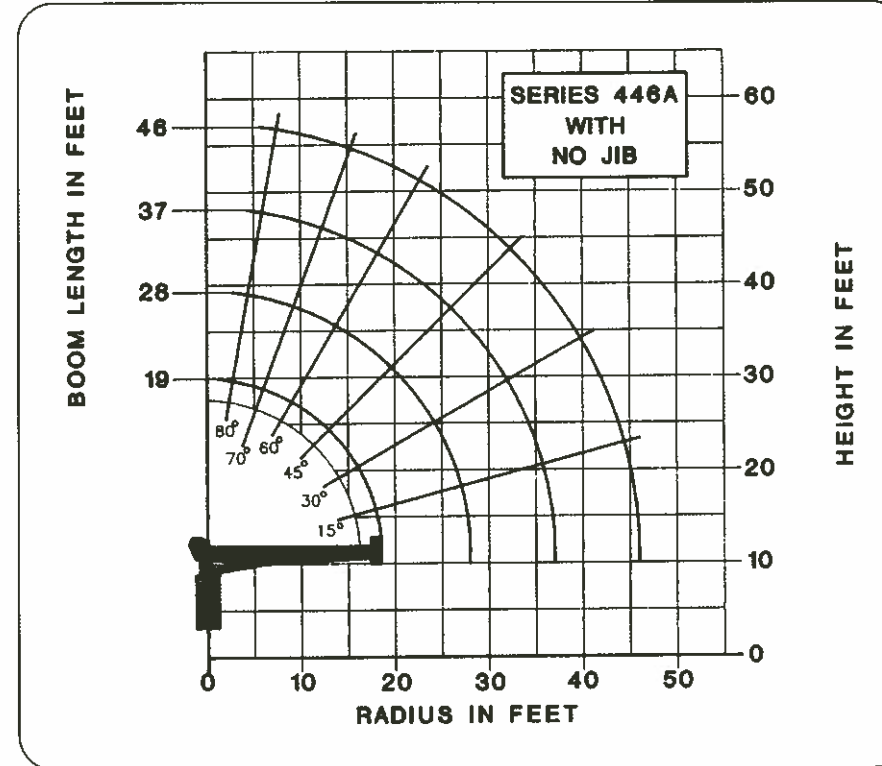
Continuous rotation (cannot be used with hydraulic options)

CAUTION

- Do not operate the crane (truck, boom/jib, accessories or loads) within 10 ft (3m) of live power lines or any other source or conductor of electricity.
- When lifting a load, the crane must be leveled, with outriggers properly extended. Always refer to the capacity chart, and do not exceed maximum rated capacity—overloading the crane may cause instability or structural collapse.
- Reduce loads to allow for ground conditions, operating speeds, and the effect of freely suspended loads; weights of all accessories attached to the boom, jib, or loadline must be deducted from the effective lifting capacity; do not exceed jib capacities at reduced boom lengths.
- No protection system is infallible, and there is no substitute for training, sound judgment, and caution; follow all guidelines outlined in the operator's manual.



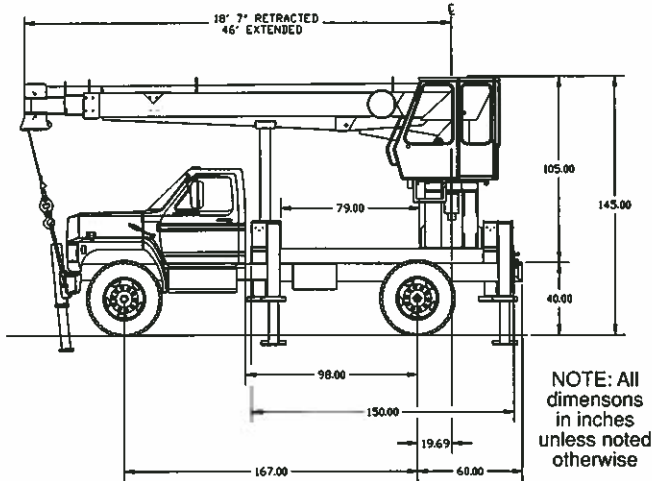
The Series 400AU shown mounted on an Isuzu FTR10 chassis



NOTE: Rated loads do not exceed 85% of the tipping load. Structural strength ratings in the chart below are shaded in color. The capacities shown will be reduced when accessories are attached to the boom or loadline.

LOAD RADIUS (FEET)	LOADED BOOM ANGLE	19 FT BOOM (LBS)	LOADED BOOM ANGLE	28 FT BOOM (LBS)	LOADED BOOM ANGLE	37 FT BOOM (LBS)	LOADED BOOM ANGLE	46 FT BOOM (LBS)
4	79°	20,000						
6	73°	15,000	79°	13,000				
8	66°	12,000	75°	10,700	80°	10,000		
10	59°	10,000	71°	9,350	76°	8,450		
12	52°	9,100	66°	7,800	73°	7,400	77°	6,850
14	43°	7,800	62°	7,050	69°	6,200	74°	5,750
16	32°	6,950	57°	6,000	66°	5,500	72°	5,200
18	18°	5,850	53°	5,500	63°	5,150	69°	4,650
20			47°	5,050	60°	4,650	67°	4,350
25			30°	4,100	50°	3,800	60°	3,500
30					39°	3,150	53°	3,000
35					22°	2,600	45°	2,600
40							32°	2,250
45							15°	1,800

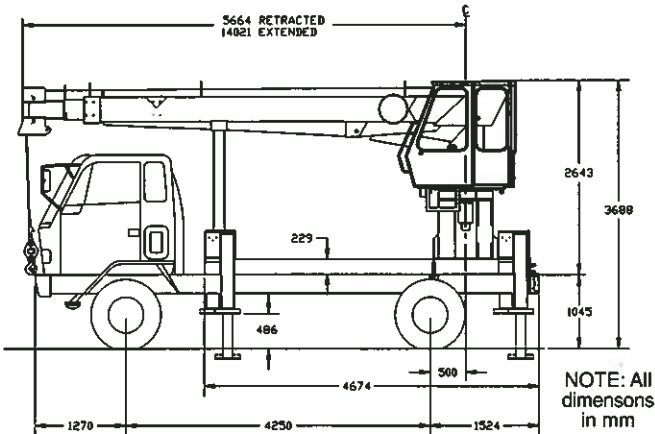
Bare Chassis Weight: 6,069 lb/2753 kg (FA); 4,231 lb/1919 kg (RA)
 Estimated final weight: 9,700 lb/4400 kg (FA); 15,300 lb/6940 kg (RA)



Ford F800D

- 167-in wheelbase/98-in (4242 mm) cab-to-axle
- 12,000 lb front axle and springs (5442 kg)
- 19,000 lb rear axle and springs (8617 kg)
- 6-cylinder turbo diesel engine —210 HP
- 6-speed manual transmission
- Steel "C" channel frame with angle reinforcement
- Air brakes with park brake
- Horizontal exhaust
- One 50-gallon (189 L) fuel tank
- Radial tires with disc wheels
- 92 amp alternator/full gages
- AM-FM radio

Bare Chassis Weight: 5,380 lb/2440 kg (FA); 3,660 lb/1660 kg (RA)
 Estimated final weight: 8,146 lb/3695 kg (FA); 14,892 lb/6755 kg (RA)



Isuzu FTR33H

- 167-in wheelbase/135-in cab-to-axle (4242-mm/3429-mm)
- 12,128-lb front axle and springs (5500 kg)
- 20,286-lb rear axle and springs (4200 kg)
- 6-cylinder turbo diesel engine —200 HP
- 6-speed manual transmission
- Steel "C" channel frame with angle reinforcement
- Air brakes with park brake
- Horizontal exhaust
- One 50-gallon (189 L) fuel tank
- Radial tires with disc wheels
- 40 amp alternator/full gages
- AM-FM radio

National Crane is ISO 9001 Certified



NATIONAL CRANE
 A Grove Worldwide Company

General Offices

11200 No. 148th St.
 Waverly, NE 68462 U.S.A.
 Phone: (402) 786-6300
 FAX: (402) 786-6363
 Email: sales@nationalcrane.com
 Web: <http://www.nationalcrane.com>

National Crane reserves the right to change designs and specifications at any time without notice.

Printed in U.S.A.

Form No. S400AU/797/3M/NCC